



Bringing Glycomics to Life®

**S-BIO** is a division of Sumitomo Bakelite Co., Ltd. providing products and services that mainly fall under two categories: Glycan analysis related services and products, and high performance Labware for cell culture applications.

S-BIO is dedicated to provide high throughput glycan analysis tools to advance research and development in drug discovery. With an established laboratory in Hudson, NH, S-BIO offers analytical services for glycan characterization using its proprietary GlycanMap® and GlycanMap Xpress®

Services. S-BIO specializes in the rapid and efficient analysis of both N-linked and O-linked glycans to generate rapid, reproducible glycan profiles for biotherapeutics characterization and biomarker discovery programs.

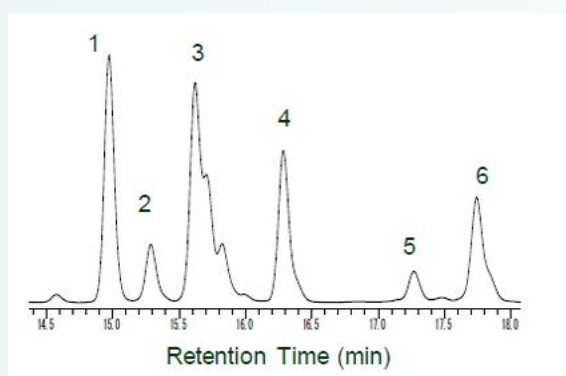
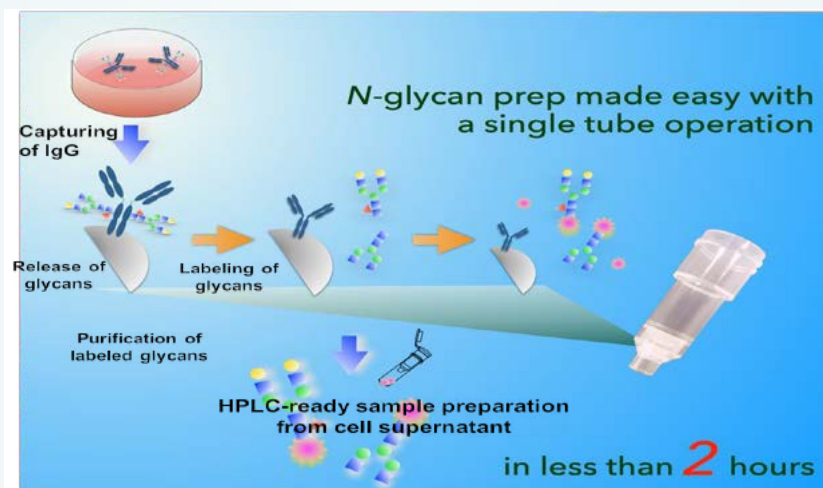
With the recent product release of “EZGlyco™ mAb-N Kit with 2-AB”, S-BIO is committed to develop and provide analytical kits to address the market needs for rapid and streamlined glycan analysis assays.

## EZGlyco™ mAb-N Kit with 2-AB

### Streamlined and rapid N-glycan preparation from IgG

#### HPLC-ready glycan preparation in less than 2 hours

- Purify IgG directly from cell culture supernatant
- Accelerated deglycosylation for glycan release
- Conventional 2-AB label in non-toxic reductant



#### N-Glycan profiling of human IgG using the EZGlyco™ mAb-N Kit with 2-AB.

10 µg hIgG was spiked in culture medium and 2-AB-labeled N-glycans. An aliquot of 0.2 µg IgG was analyzed using HPLC.

S-BIO, 20 Executive Drive, Hudson, NH 03051.  
Tel: (603) 425 9697 E-mail: info.s-bio@s-bio.com

[www.s-bio.com](http://www.s-bio.com)