

International Conference on

Oral and Maxillofacial Pathology

Chicago, USA May 09-10, 2016

Initial Announcement

Dear Colleagues,

OMICS International is delighted to welcome you to Chicago, USA for the prestigious **International Conference on Oral and Maxillofacial Pathology**. Oral Pathology 2016 will focus on “**International collaboration to throw some light on Oral and Maxillofacial Pathology**”. We are confident that you will enjoy the Scientific Program of this upcoming Conference.

We look forward to see you at Chicago, USA

With Regards

Oral Pathology 2016 Organizing Committee
OMICS International Conferences

Editorial Board Members of Supporting Journals:

B Rai
Kepler Space Institute, USA

Davidson O Lawoyin
Howard University College of Dentistry, USA

James E Jones
Department of Pediatric Dentistry, Indiana University, USA

Nick Girdler
School of Dental Sciences, Newcastle University, UK

Yoichiro Miyake
Institute of Health Biosciences, Tokushima University
Graduate School, Japan

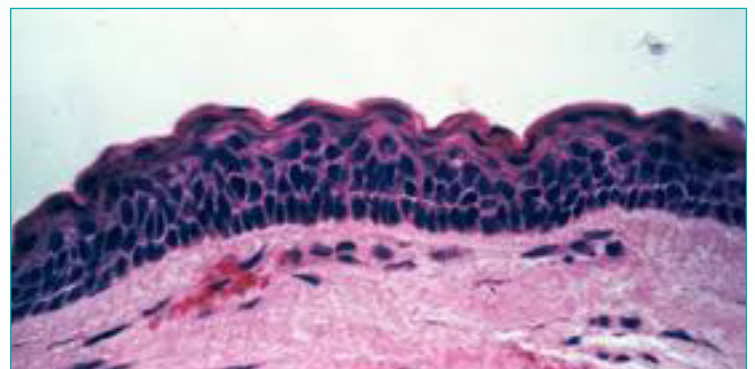
Boyen Huang
Charles Sturt University, Australia

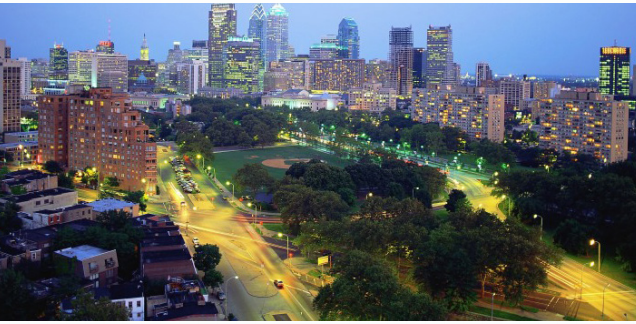
Simone Duarte
Department of Basic Sciences, New York University
College of Dentistry, New York, USA

Abdel Salam Ezzat
Professor in King Abdel Aziz university, Saudi Arabia.

R Scott Shaddy, DDS
Associate Professor, Creighton University, School Of Dentistry
Omaha, USA

Muhammad Ahmed Gad
Faculty of Dentistry-Alex. University, Egypt





Program Announcement

Venue

Chicago, USA

Important Dates

Abstract Submission Opens: November 02, 2015

Registration Opens: November 20, 2015

Early Bird Registration: February 22, 2016

On Spot Registration: May 09, 2016

Accommodation

A large number of rooms have been reserved. Discounted room rates for Oral Pathology 2016 participants are proposed. Only reservations made through the Conference will benefit these rates. The Congress Center can be easily reached by public transportation.

Exhibition and Sponsorship

An Exhibition will be held concurrently with the Congress. The coffee break and lunch areas will be located adjacent to the booths. Thanks to exhibitors from all over the world, attendees will have a complete overview of new findings in the fields of Oral and Maxillofacial Pathology.

About Philadelphia

Chicago is the third most populous city in the United States. Chicago was incorporated as a city in 1837, near a portage between the Great Lakes and the Mississippi River watershed, and experienced rapid growth in the mid-nineteenth century. Today, the city is an international hub for finance, commerce, industry, technology, telecommunications, and transportation, with O'Hare International Airport being the busiest airport in the world; it also has the largest number of U.S. highways and railroad freight. In 2010, Chicago was listed as an alpha+ global city by the Globalization and World Cities Research Network and ranks seventh in the world in the 2012 Global Cities Index. Chicago stands in 3rd position in most important metro markets for Pathology. Chicago has been a world center of higher education and research with several universities that are in the city proper or in the immediate environs. These institutions consistently rank among the top "National Universities" in the United States, as determined by U.S. News & World Report. In 2009 Chicago placed 9th on the UBS list of the world's richest cities.

Conference Secretariat

2360 Corporate Circle, Suite 400 Henderson, NV 89074-7722, USA, Ph: +1-650-268-9744, Fax: +1-650-618-1414, Toll free: +1-800-216-6499
Email: oralpathology@conferenceseries.net, oralpathology@omicsgroup.com