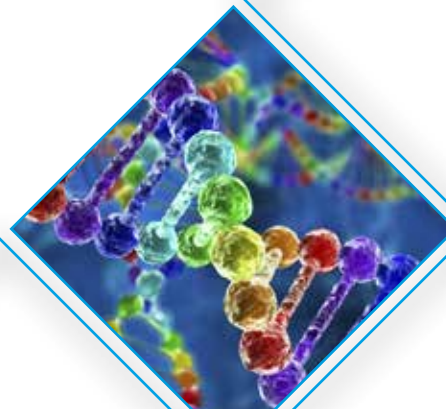


15th Global Experts Meeting on

Pathology and Laboratory Medicine

July 02-03,
2018
Bangkok,
Thailand

Theme:
Future of Pathology and
Laboratory Medicine



Dear Colleagues,

Conference Series is delighted to welcome you to Bangkok, Thailand for the prestigious 15th Global Experts Meeting on Pathology and Laboratory Medicine. Pathology Summit 2018 will focus on the theme "Future of Pathology and Laboratory Medicine". We are confident that you will enjoy the Scientific Program of this upcoming Conference.

We look forward to see you at Bangkok, Thailand.

With Regards,
Pathology Summit 2018
Conference Series Conferences

Editorial Board Members of Supporting Journals:

Moges Woldemeskel

University of Georgia, USA

Maria Trovato

University of Messina, Italy

JIN Wei-Lin

Shanghai Jiao Tong University, China

Maria Teresa Mascellino

Sapienza University of Rome, Italy

Jean-Francois Picimbon

QILU University of Technology, China

C. Cameron Yin

MD Anderson Cancer Center, USA

Tao Lin

University of Texas, USA

Katerina Dorovini-Zis

University of British Columbia, USA

M. James You

University of Texas MD Anderson
Cancer Center, USA

He Wang

Temple University, USA



Accommodation

A large number of rooms have been reserved. Discounted room rates for Pathology Summit 2018 participants are proposed. Only reservations made through the Conference will benefit these rates. The Congress Center can be easily reached by Public transportation.

Exhibition and Sponsorship

An Exhibition will be held concurrently with the Congress. The coffee break and lunch areas will be located adjacent to the booths. Thanks to exhibitors from all over the world, attendees will have a complete overview of new findings in the field of Pathology and Laboratory Medicine.

About Bangkok

Bangkok is the capital and most popular city of Thailand. The city occupies 1,568.7 square kilometres in the Central Thailand, and has a population over 8 million, or 12.6% of the country's population. There are 581 high-rise buildings in the city, ranking number 5 in the world. The city grew rapidly during 1960s through the 1980s and now exerts a significant impact among Thailand's politics, education, economy, media and modern society.

Bangkok certainly lives up to its reputation as a travel hot spot in Southeast Asia. The 'City of Angels' has funky markets, a riverside full of surprises, upmarket malls, a vibrant nightlife scene, many fabulous sights and attractions that reflect its unique heritage, and much more.



Important Dates

Abstract submission opens: August 04, 2017

Registration opens: August 04, 2017

Early bird registration: September 28, 2017

On spot registration: July 02, 2017

Venue

Bangkok, Thailand



Abstract Submission

<http://asiapacific.pathologyconferences.com/abstract-submission.php>

Note: All the relevant abstracts will be accepted and published in respective conference proceedings.

Registration

<http://asiapacific.pathologyconferences.com/registration.php>

Conference Secretariat

One Commerce Center-1201, Orange St. #600

Wilmington, Zip 19899, Delaware, USA

Tel: +1-888-843-8169, Fax: +1-650-618-1417

Email

pathologysummit@pathologyseries.com

pathologysummit@pathologyconferences.org

